

Physics
UNIT: 4PH1
Science (Double Award) 4SD0
PAPER: 1P

Wednesday 22 May 2024 – Morning

Time: 2 hours

Diagram Booklet

THIS DIAGRAM BOOKLET MUST BE RETURNED WITH THE QUESTION PAPER AT THE END OF THE EXAMINATION.

In the boxes below, write your name, centre number and candidate number.

Surname					
Other names					
Centre Number					
Candidate Number					

INSTRUCTIONS

There may be spare copies of some diagrams in case you need them.

CONTENTS

Page

3 Question 1(a) – Blank

4 Question 3

5 Question 4(a)

6 Question 5(a)

7 Question 5(b)

8 Question 5(b)(i)

9 Question 6

10 Question 6(d)

11 Question 7

12 Question 8

13 Question 9(a)

14 Question 9(b)

15 Question 10

16 Question 10(c)

17 Question 10(c)(i)

18 Question 10(c)(ii)

19 Question 11

20 Question 11(c)

21 Question 12

Spare Copies

22 Question 1(a) – Blank

23 Question 4(a)

24 Question 5(a)

25 Question 6

26 Question 6(d)

27 Question 8

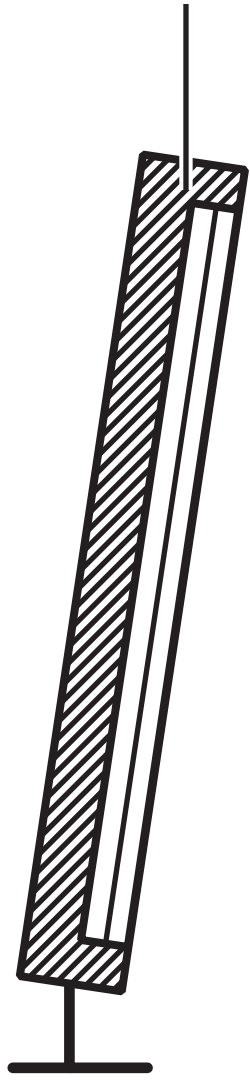
28 Question 10(c)(ii)

29 Question 12

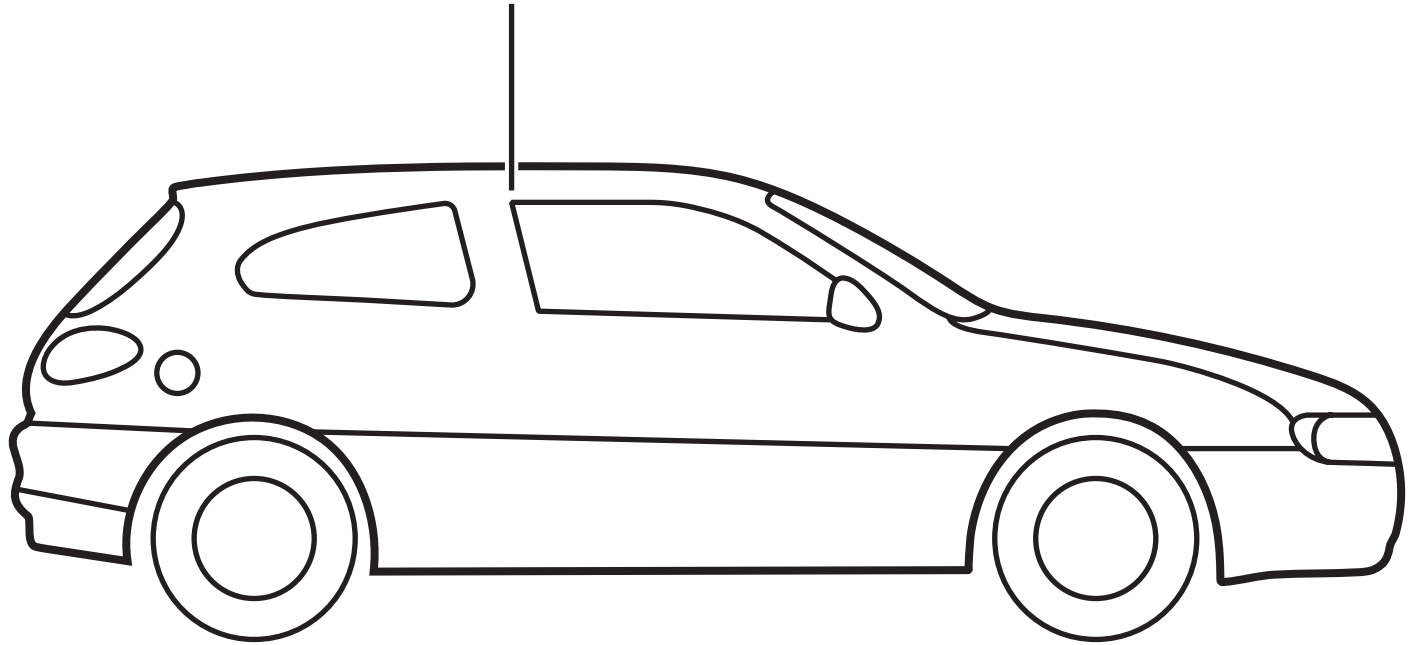
Question 1(a) – Blank

Question 3

infrared heating lamps



car



Question 4(a)

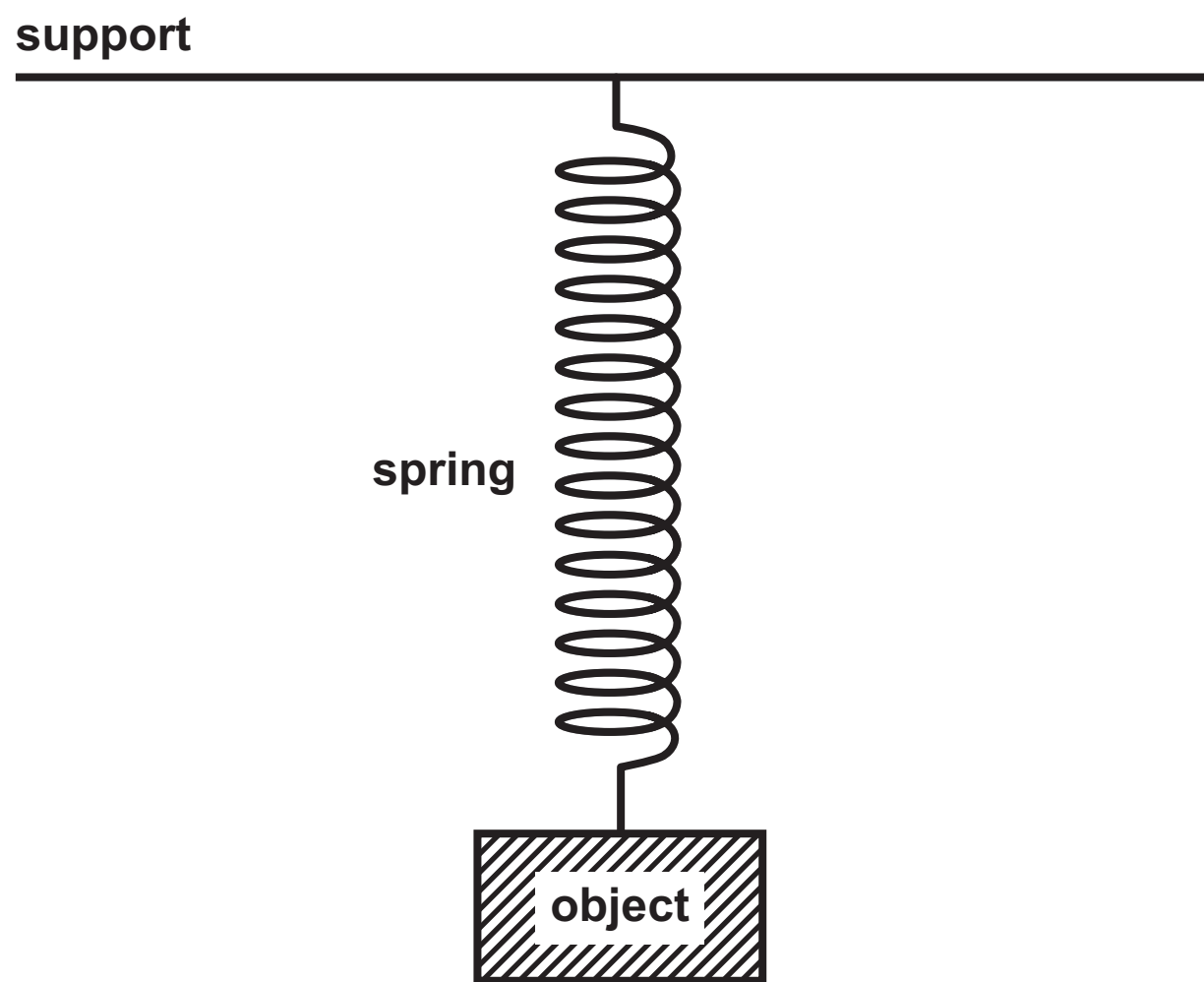
Energy store	Increases	Decreases	Stays the same
chemical			
gravitational potential			
nuclear			
thermal			

Question 5(a)



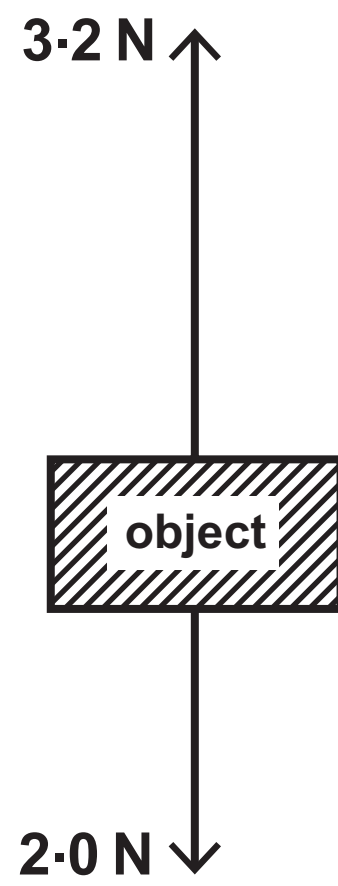
Question 5(b)

DIAGRAM 1



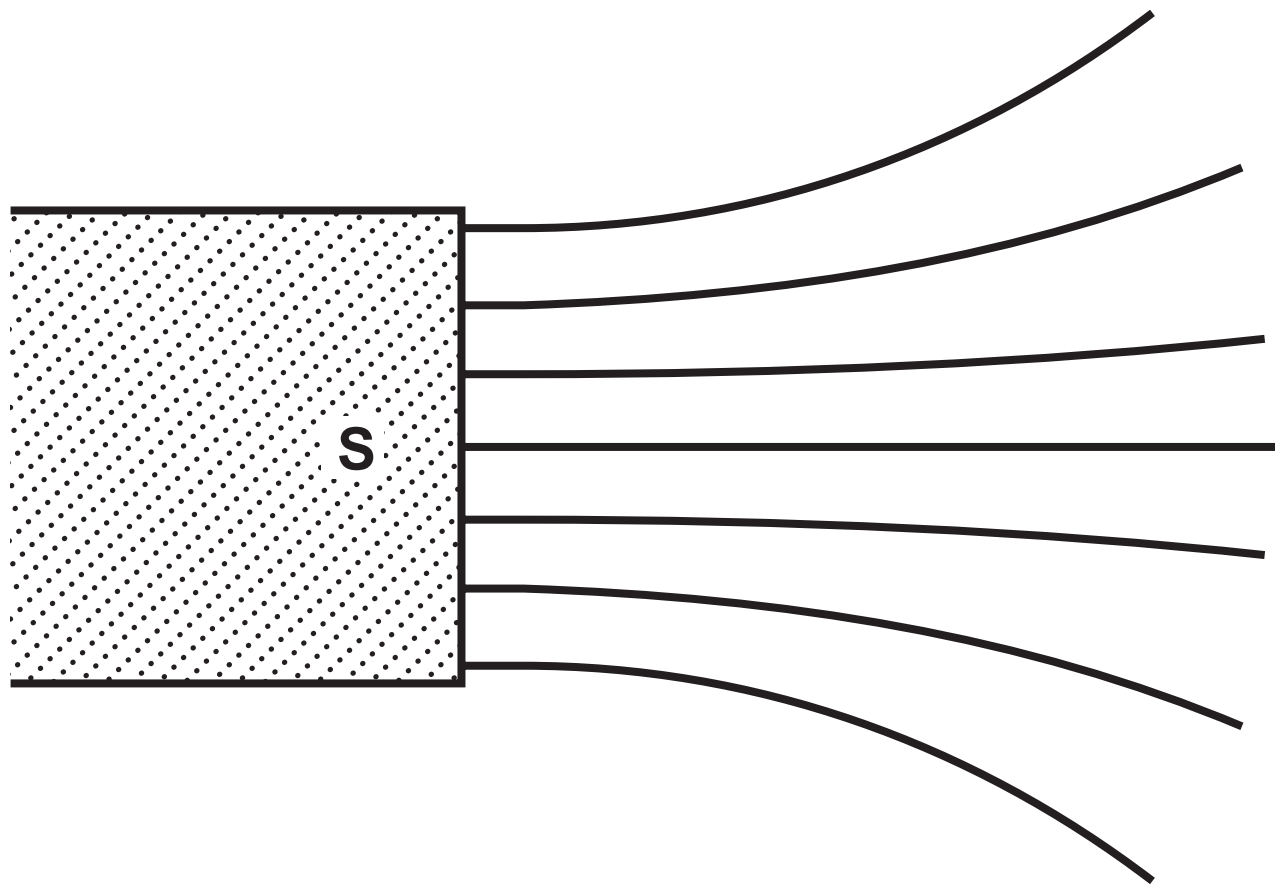
Question 5(b)(i)

DIAGRAM 2



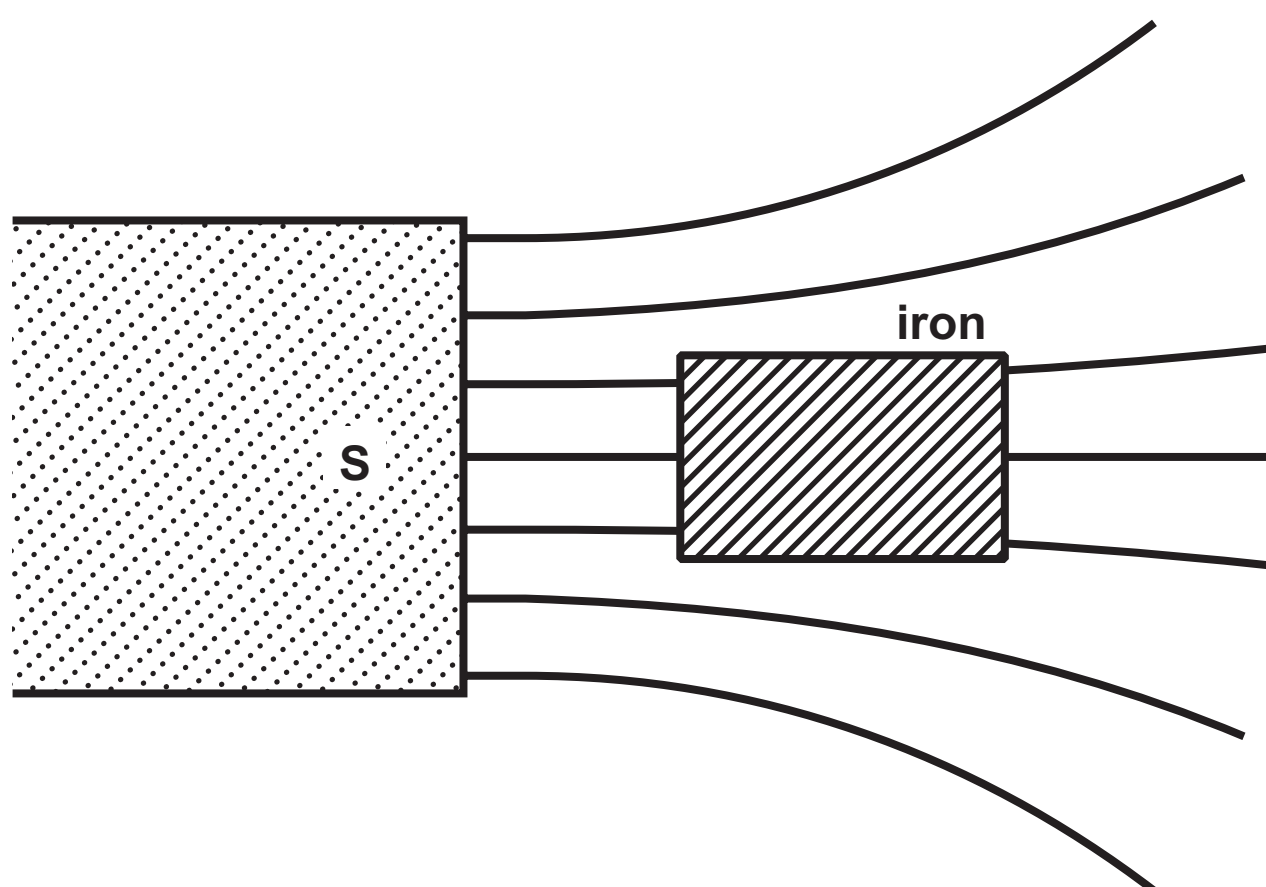
Question 6

DIAGRAM 1

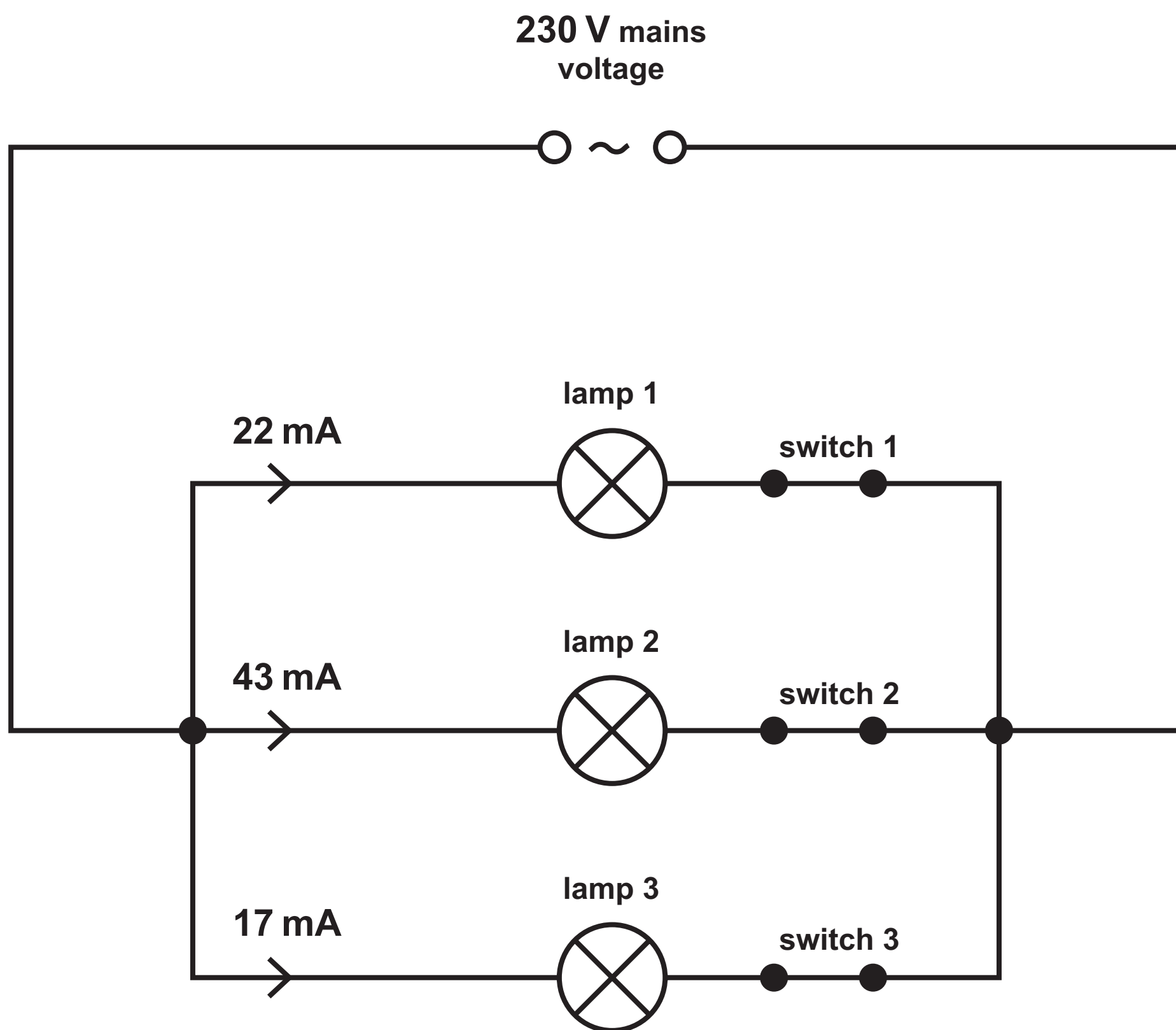


Question 6(d)

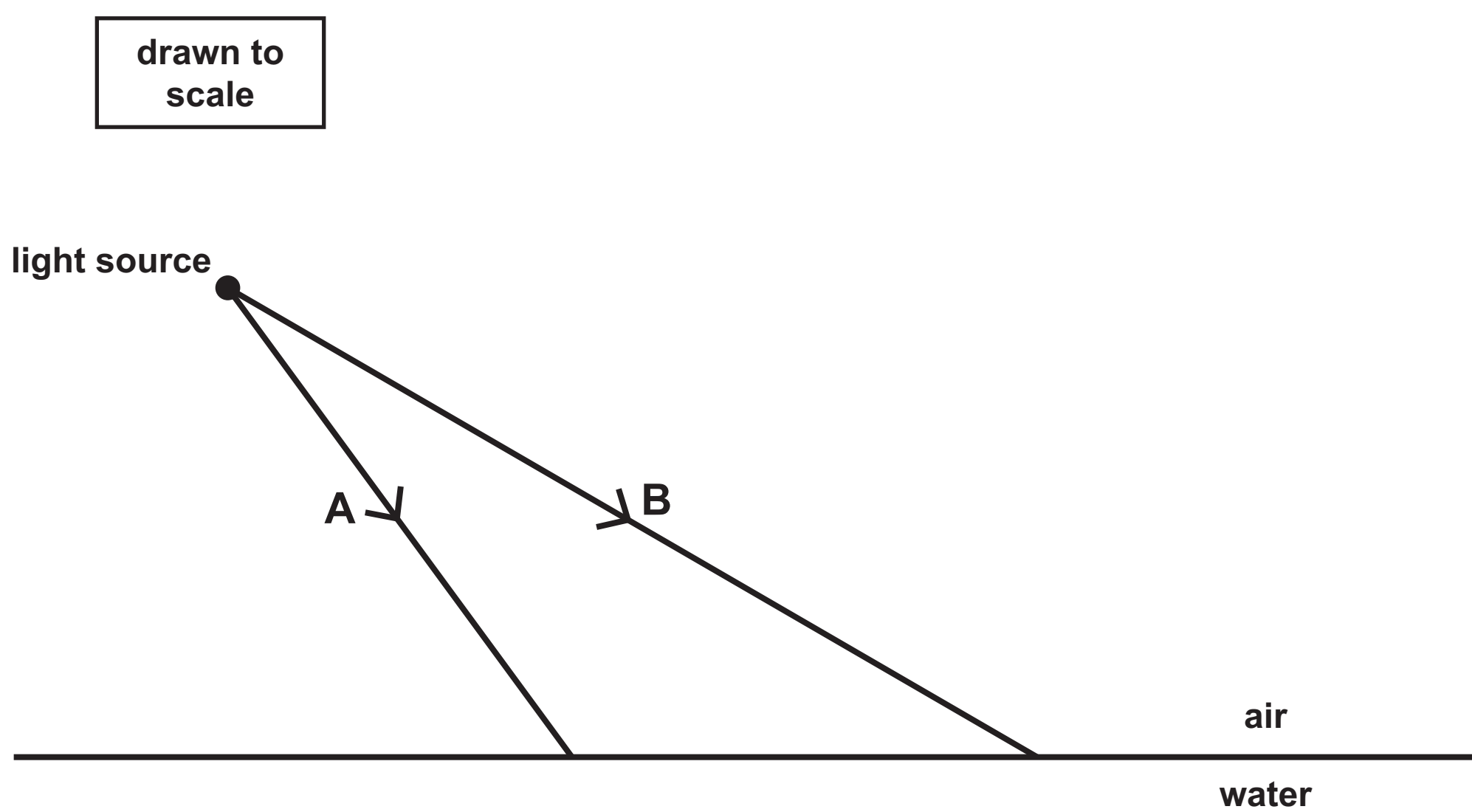
DIAGRAM 2



Question 7

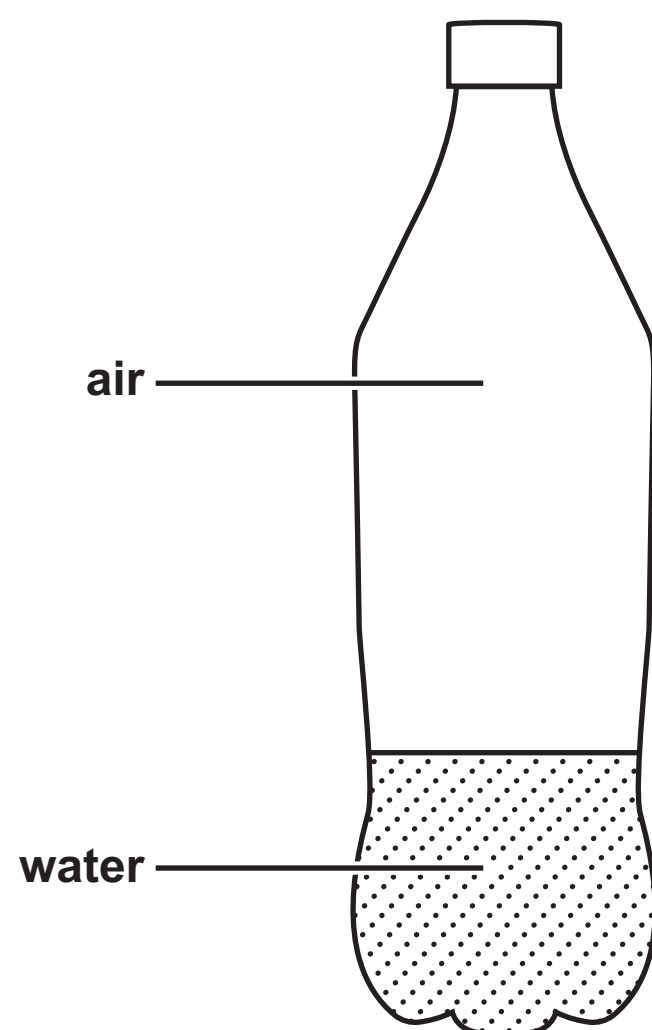


Question 8



Question 9(a)

DIAGRAM 1



Question 9(b)

DIAGRAM 2

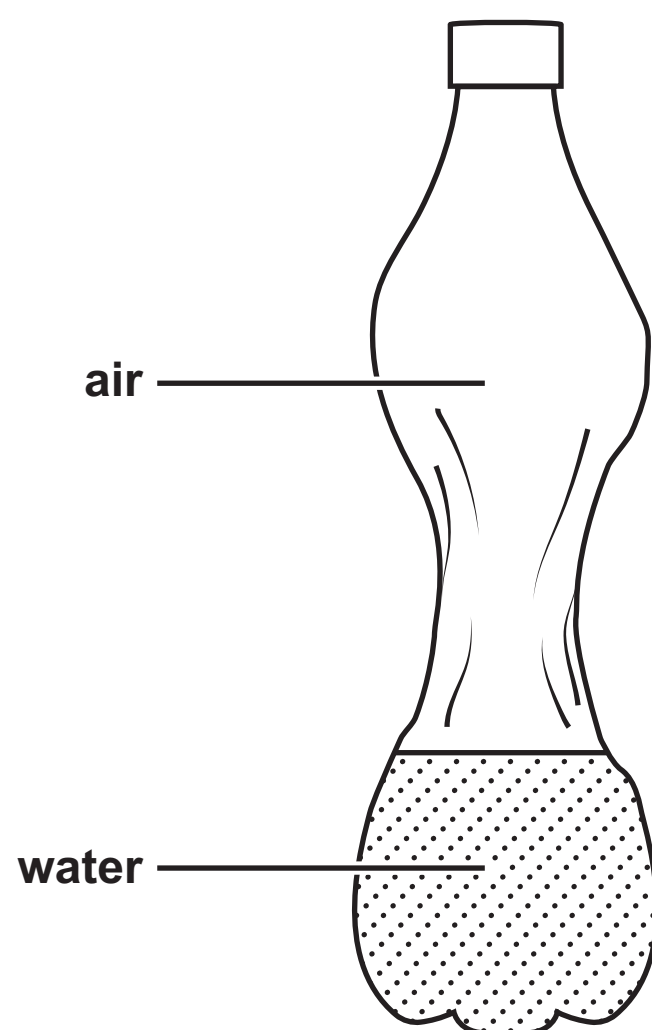
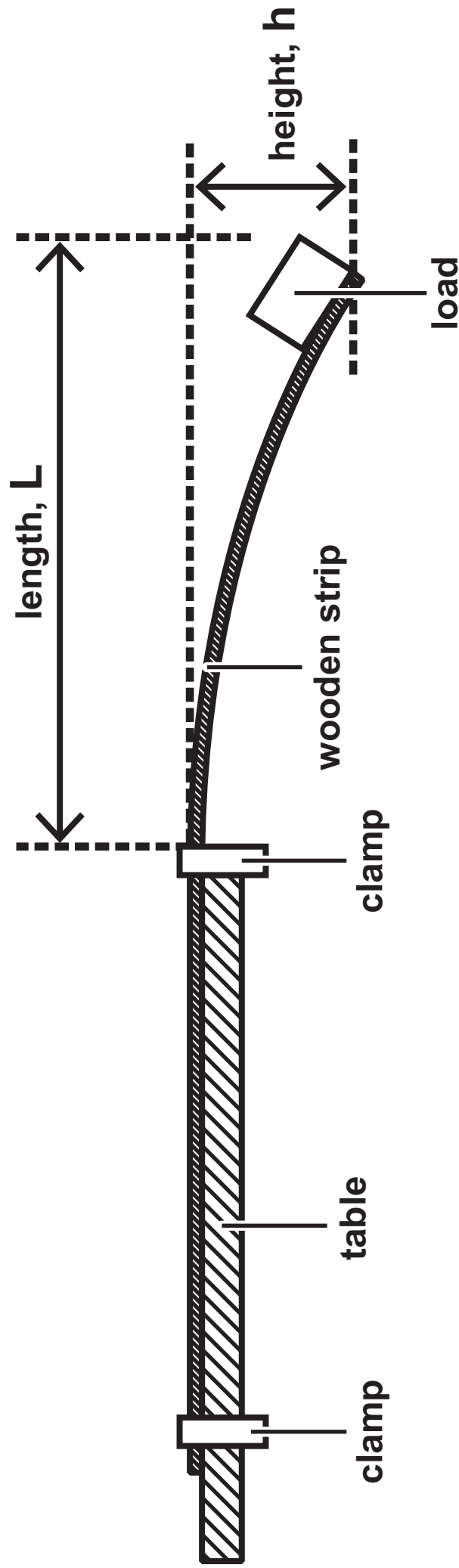


DIAGRAM 1

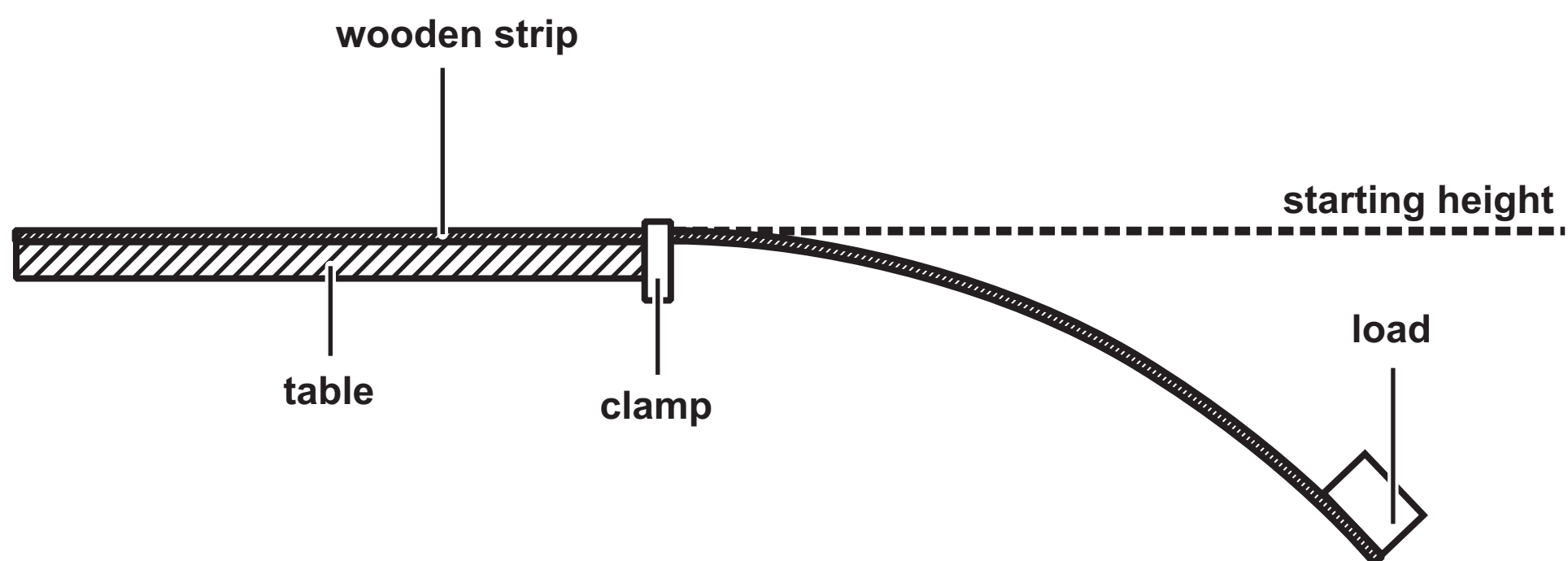


Question 10(c)

Length (L) in cm	Height (h) in cm
20	2
40	8
60	18
80	
100	53
120	71

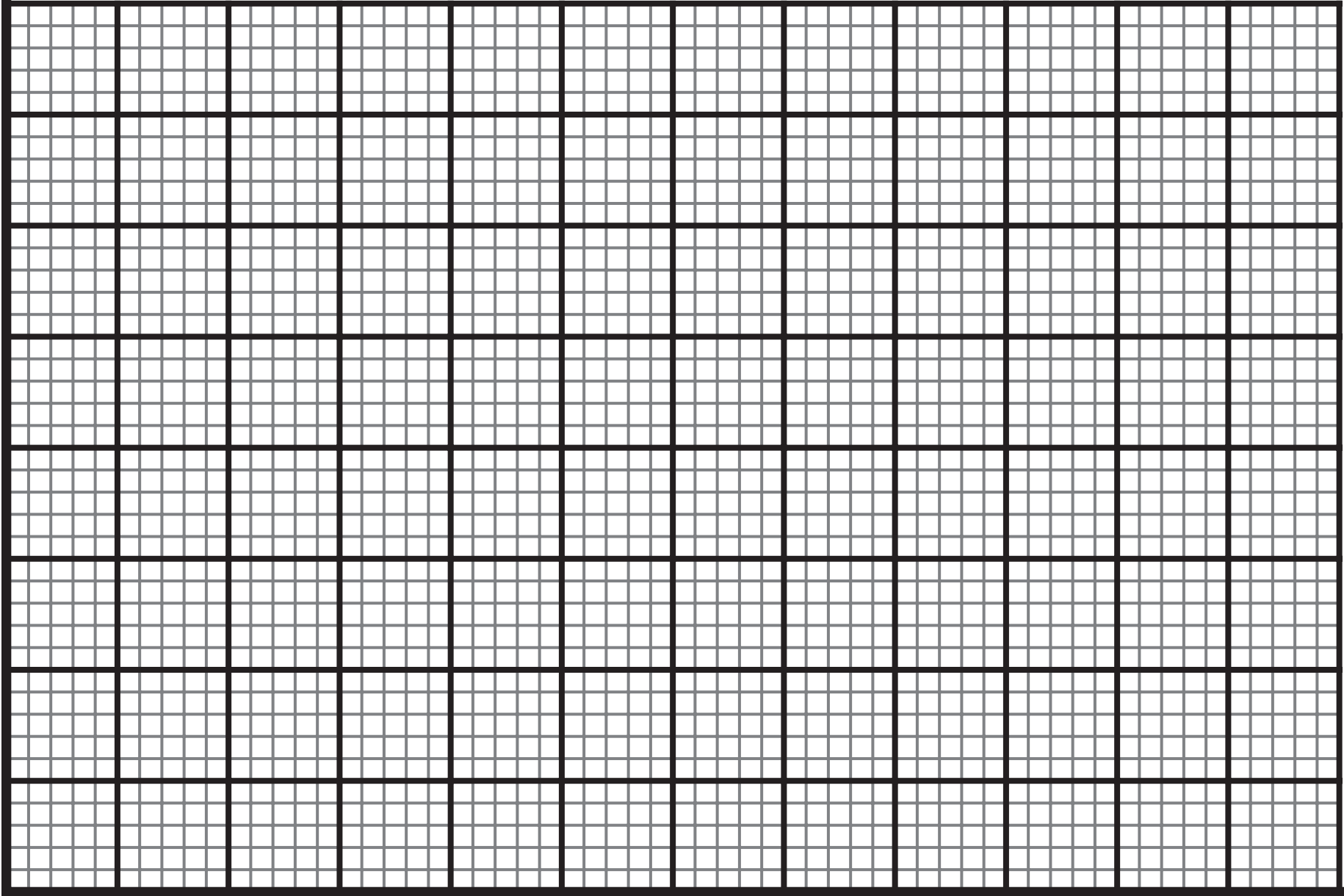
Question 10(c)(i)

DIAGRAM 2



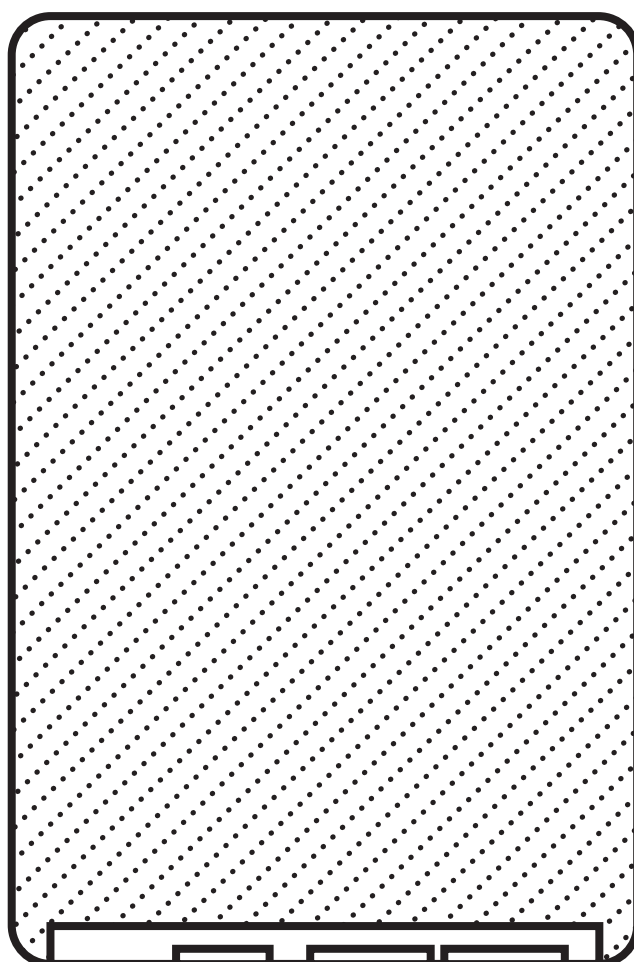
Question 10(c)(ii)

Height (h) in cm



Length (L) in cm

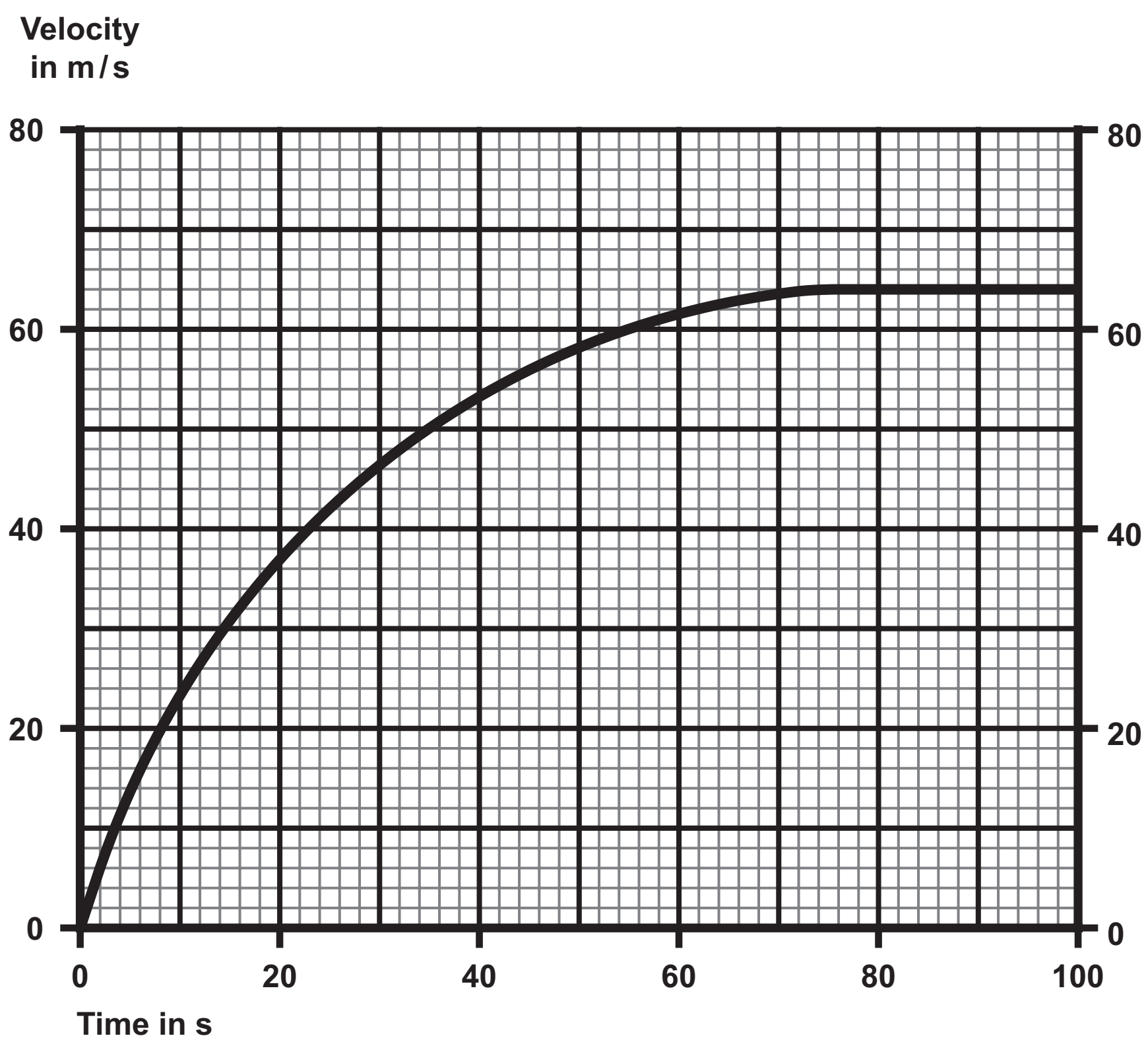
Question 11



Question 11(c)

Electronic device	Charge stored in Ah	Frequency of recharging
A	2·4	once every day
B	4·2	once during the week
C	6·8	once during the week

Question 12



Question 1(a) – Blank

Question 4(a)

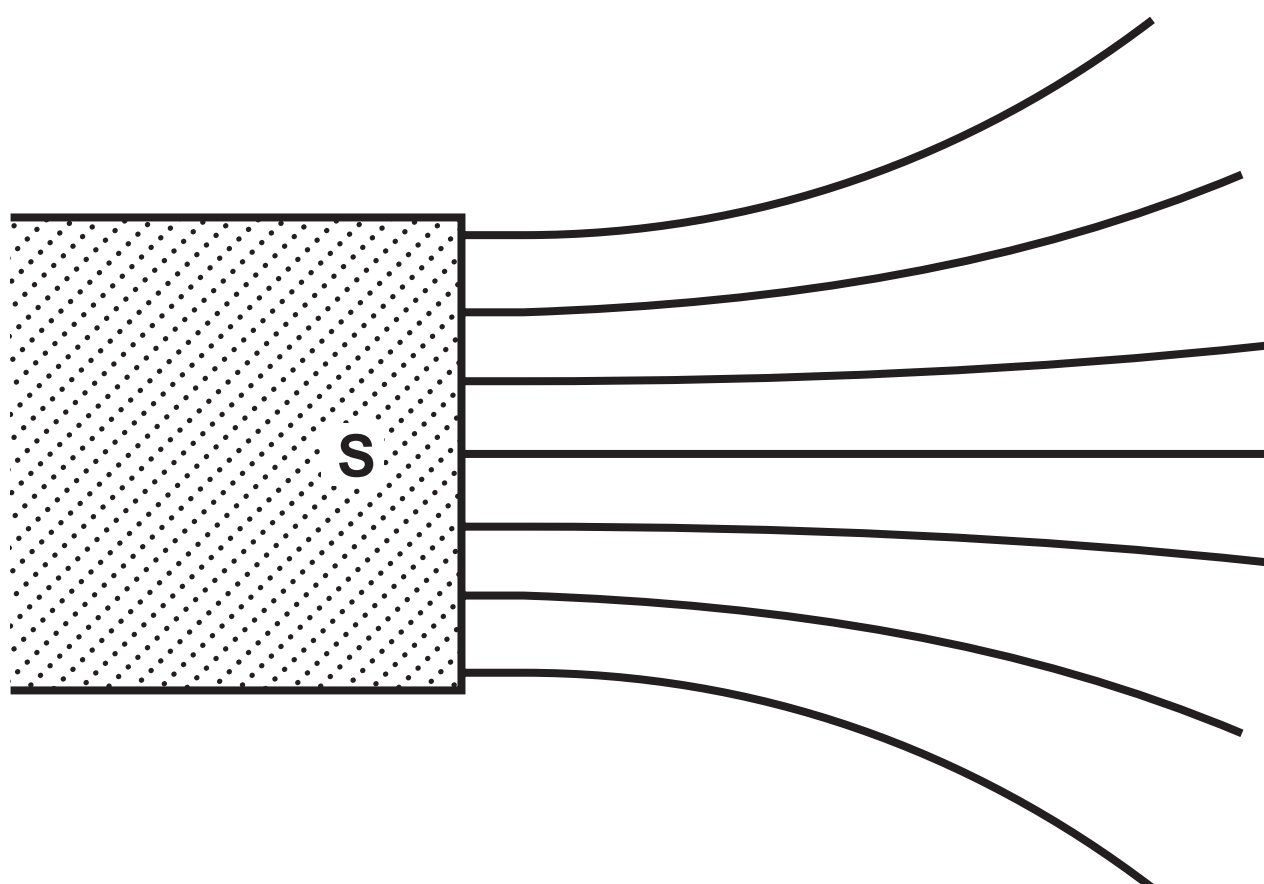
Energy store	Increases	Decreases	Stays the same
chemical			
gravitational potential			
nuclear			
thermal			

Question 5(a)



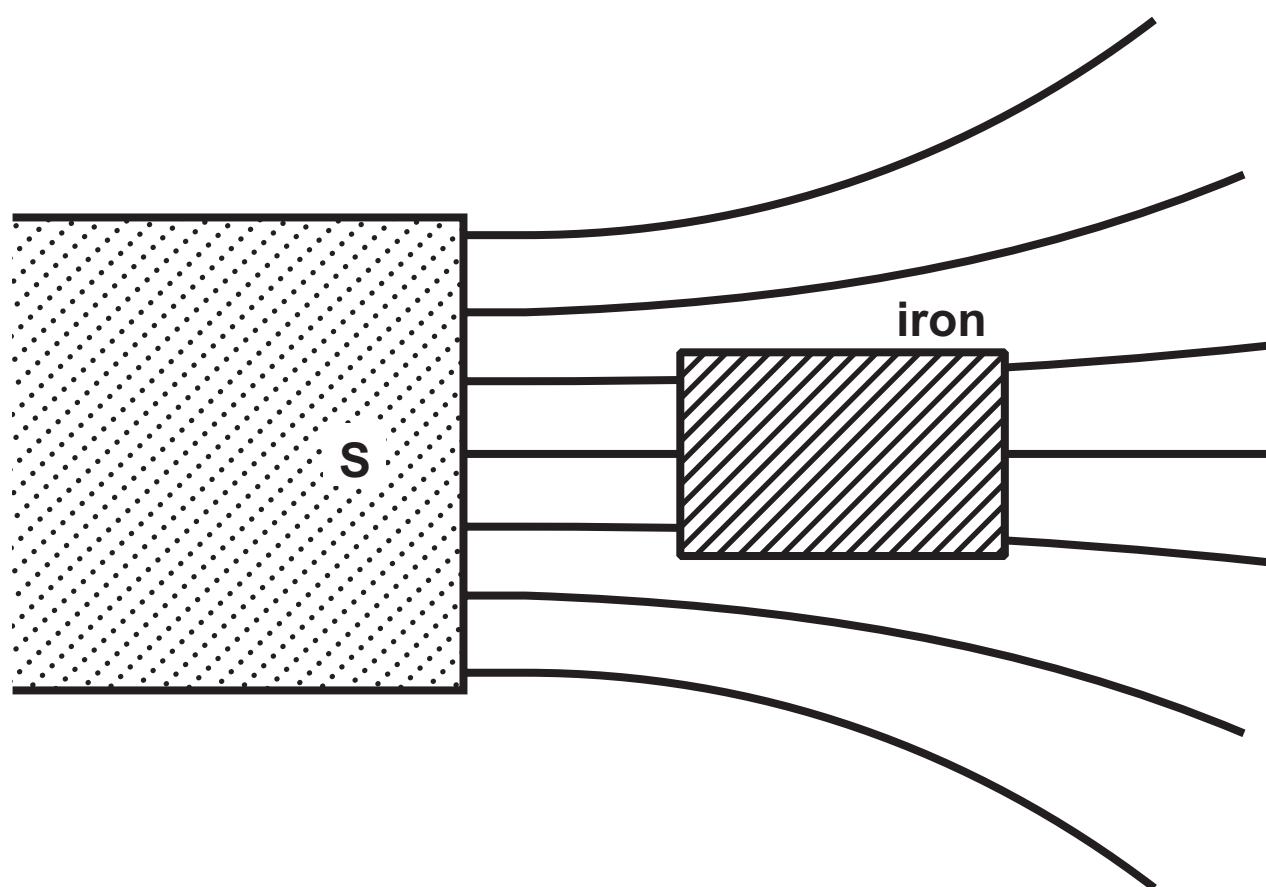
Question 6

DIAGRAM 1

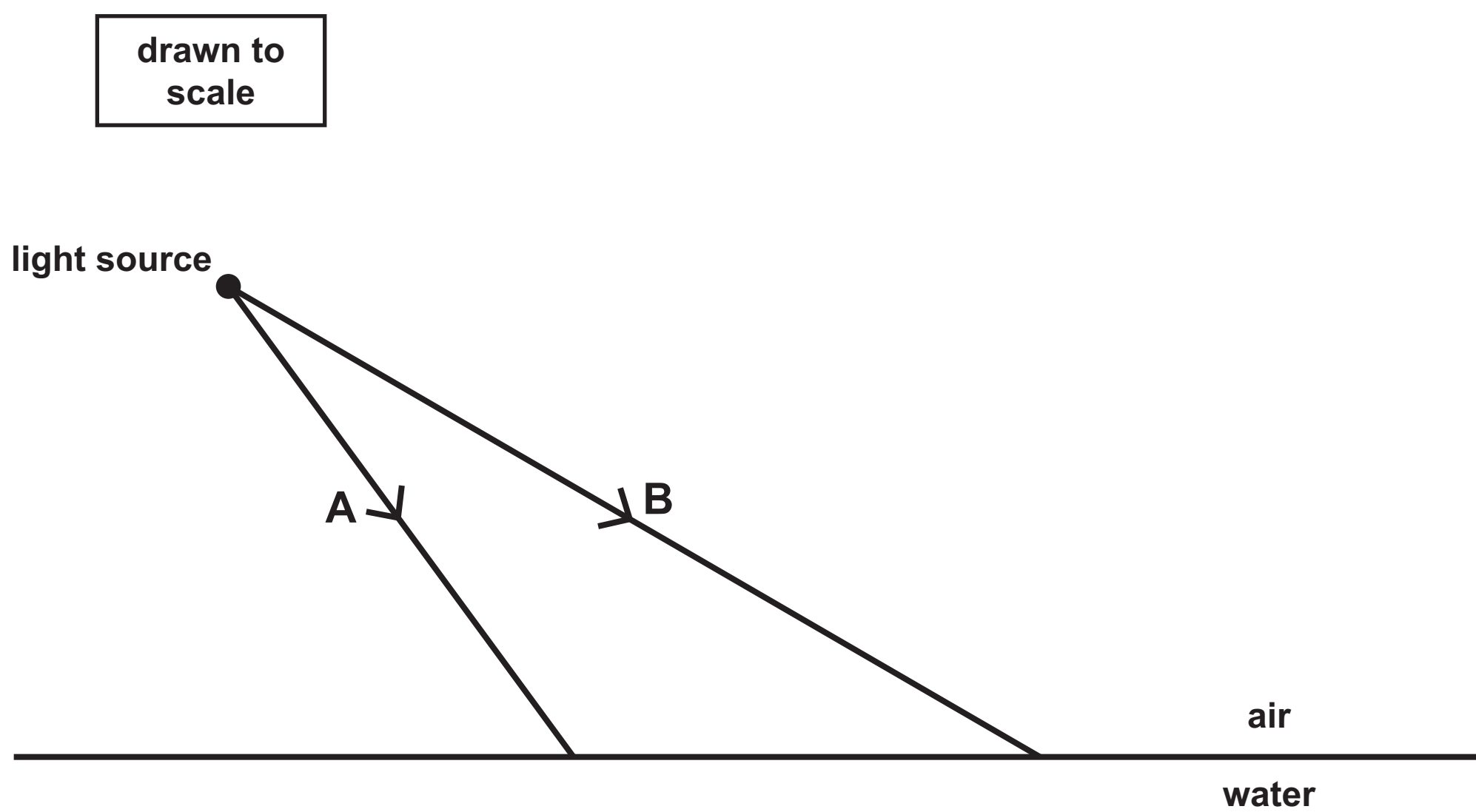


Question 6(d)

DIAGRAM 2

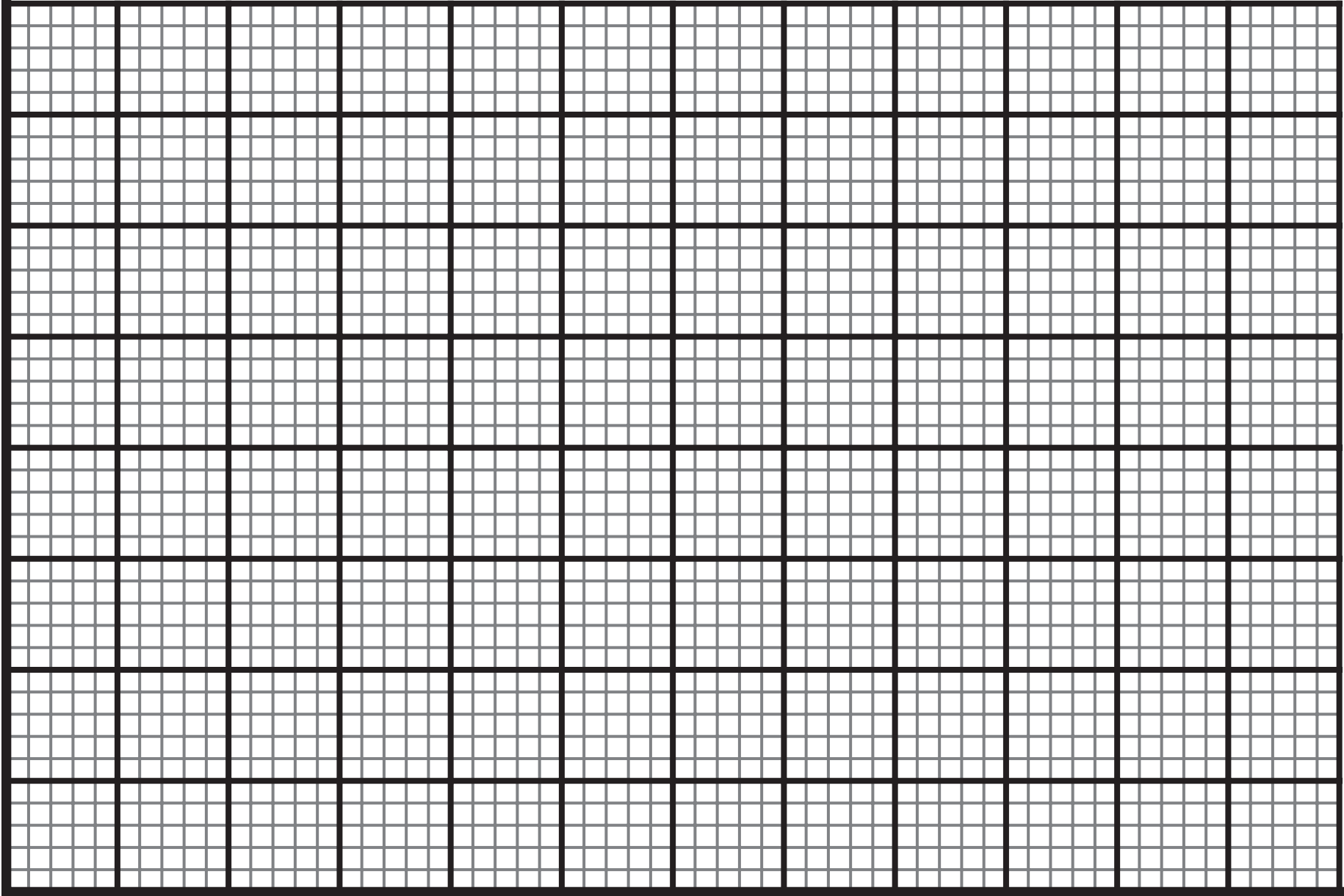


Question 8



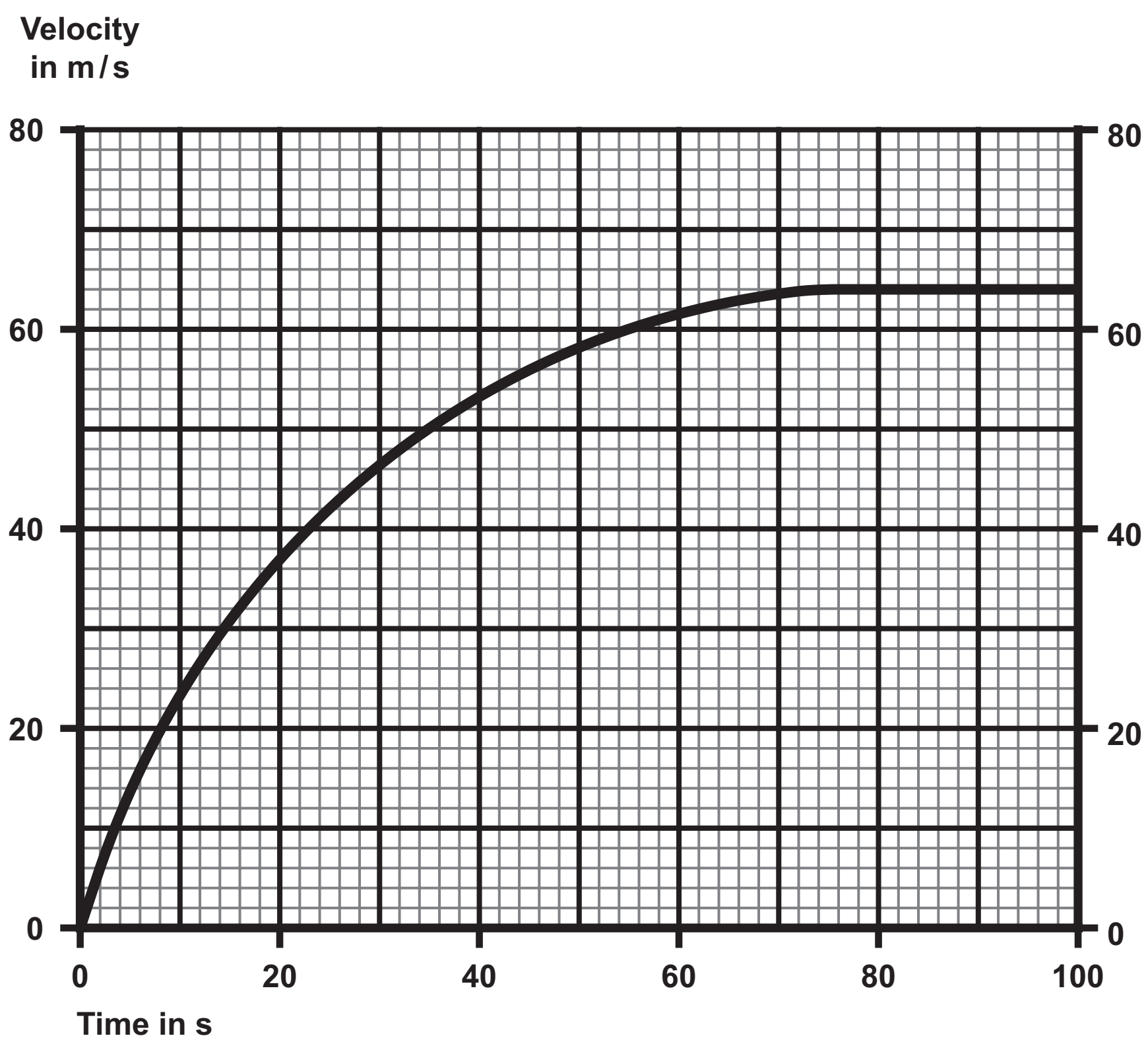
Question 10(c)(ii)

Height (h) in cm



Length (L) in cm

Question 12



Source information

Question 3

Source: adapted from © Dmitry Kalinovsky/Shutterstock